

GS3 2630



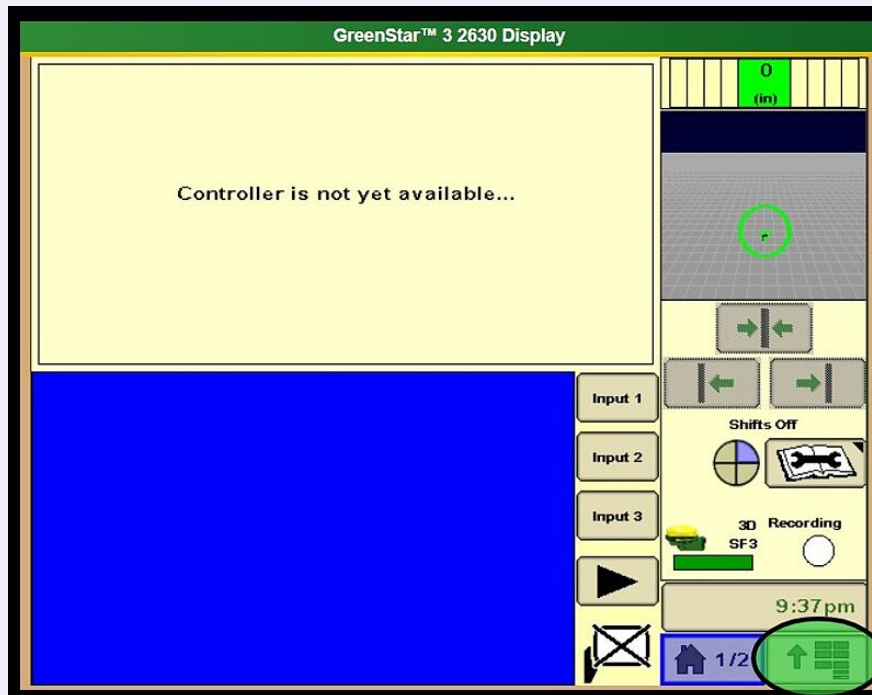
CLEARING DATA

How to clear data from a GS3 2630.

GS3 2630 - Clearing Data

How to clear data from a GS3 2630

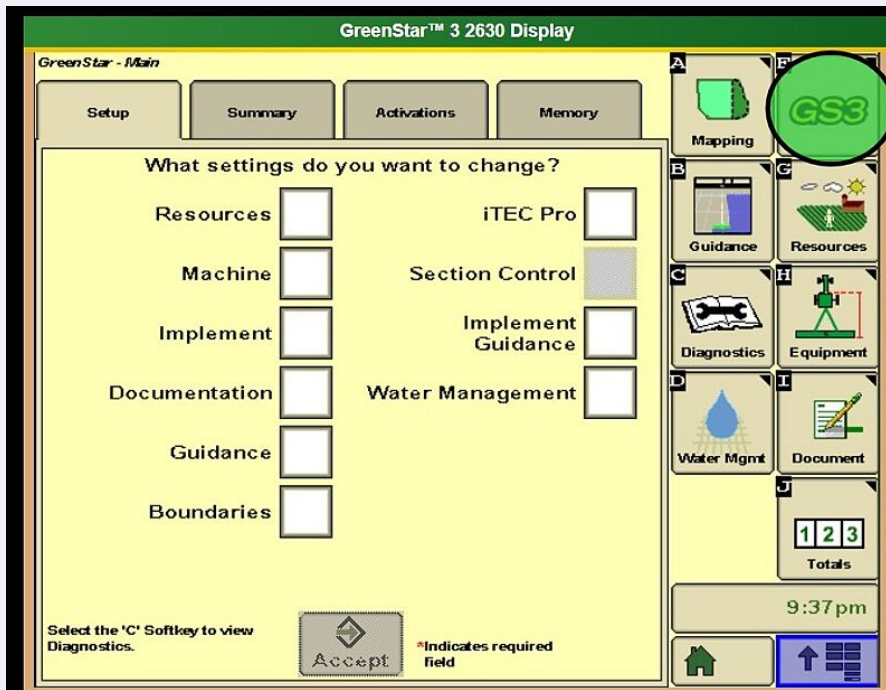
- 1 Select Main Menu on bottom right



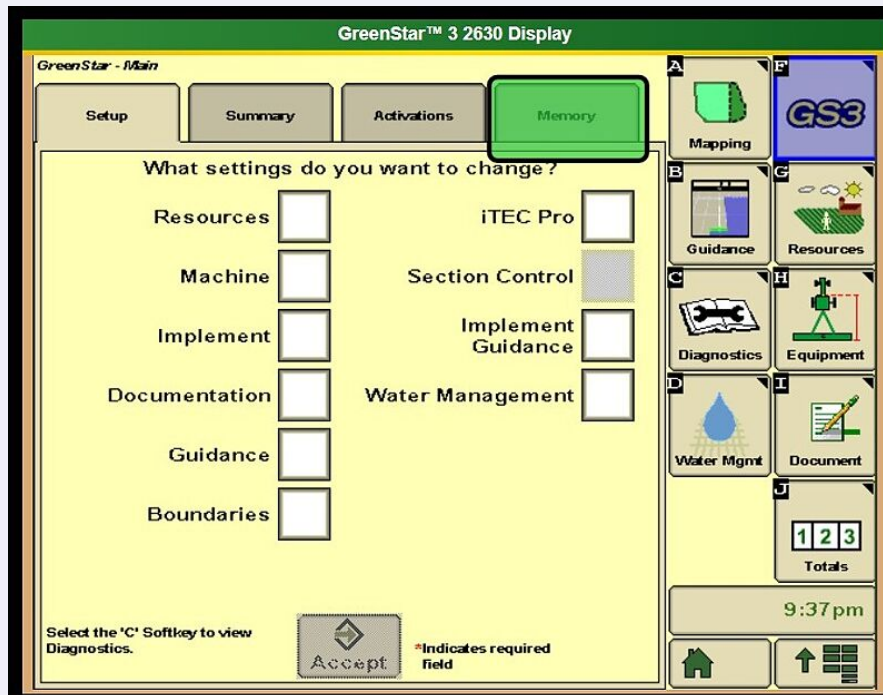
2 Select "GreenStar" or the softkey that says "GS3"



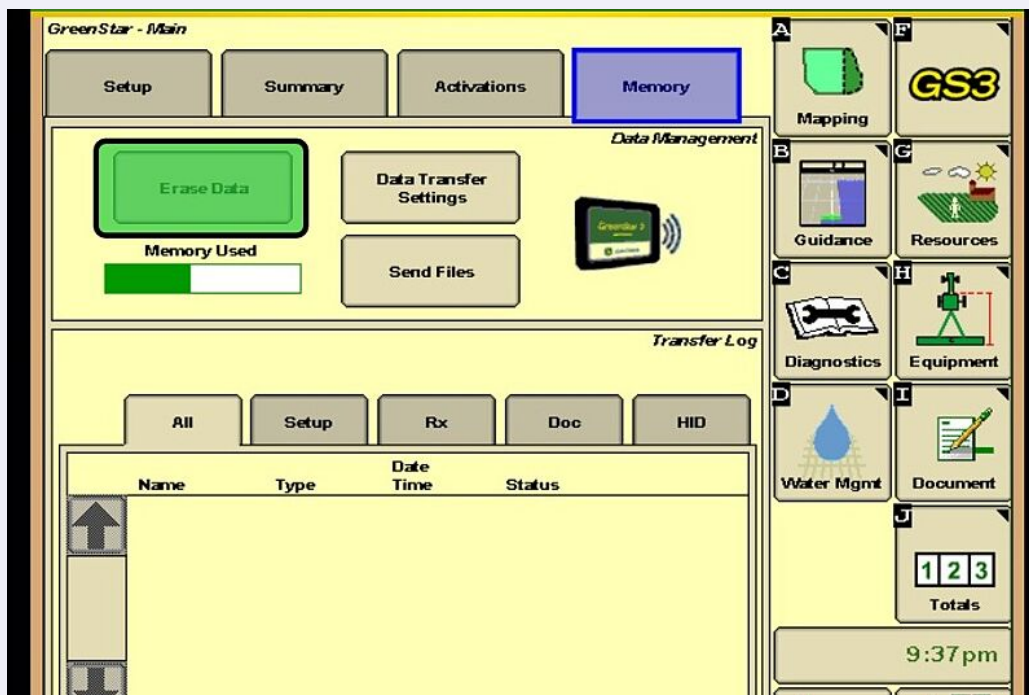
3 Select "GS3" softkey in the top right of the screen



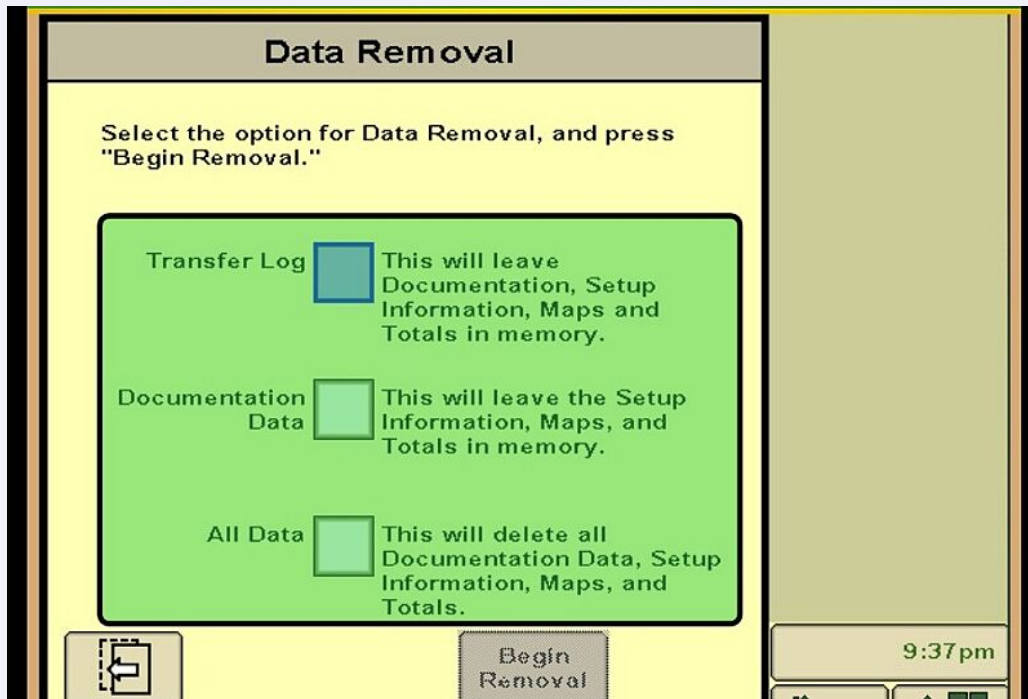
- 4 Select "Memory" tab at the top of the screen



- 5 Select "Erase Data"



6 Select which option the Operator needs.



! Selecting "Transfer Log" will remove the files that are to be transferred to the Operator's Operations Center account

! Selecting "Documentation Data" will remove agronomic data that has been recorded in the past. It will leave data like the Operator's Client, Farm, Field, equipment info, etc.

! Selecting "All Data" will reset the display to Factory Defaults

7

Once Operator has made a selection, select "Begin Removal"

